

Gainscha

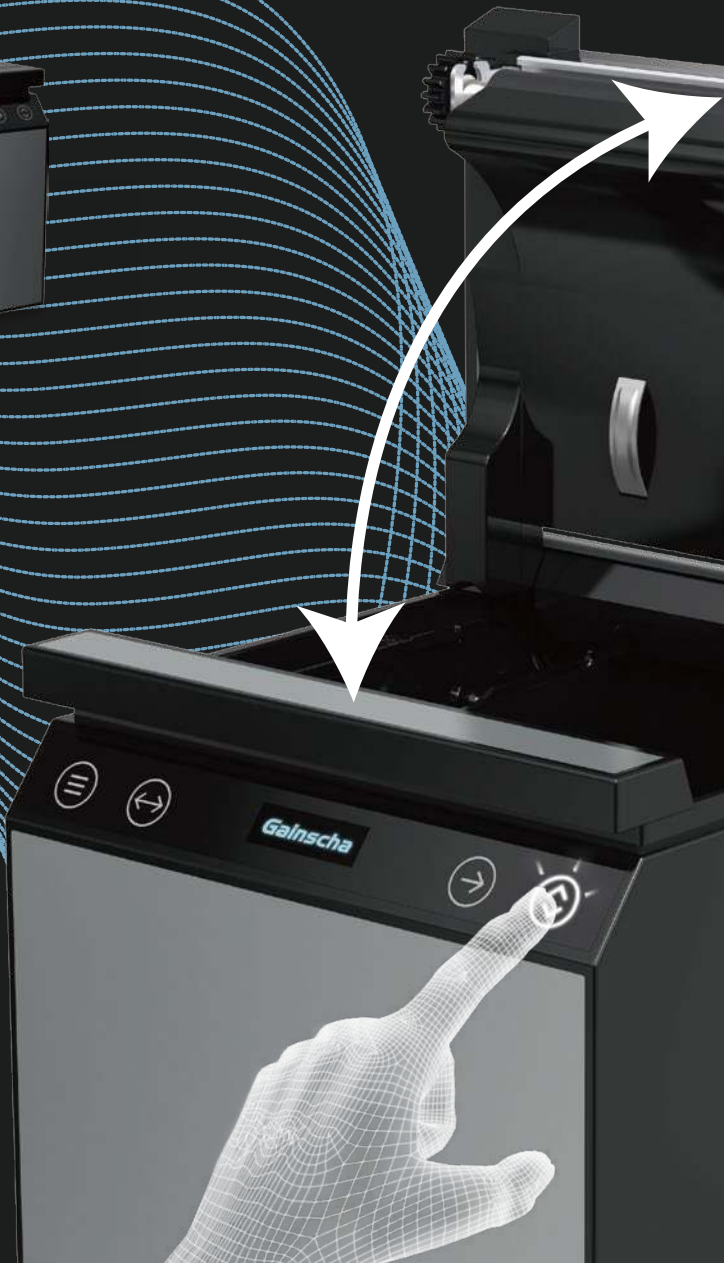
# CUBE G3

FLEXIBLY INSTALL

Front exit



Top exit



Large Retailer



Hotel



Shopping Mall



Healthcare



Retail



Fine-Dining

# GA-G3

PRINTER MODEL	GA-G3
Print Method	Direct thermal
Print density	864dot/line(300DPI)
Print speed	200mm/s
Print width	72mm
Paper Roll	80mm diameter
Interface	Serial + USB + Ethernet+RJ11 cash drawer
Barcode type	UPC-A, UPC-E, EAN/JAN-8, EAN/JAN-13, CODE39/ITF/CODEBAR/CODE93/CODE128 / QRCODE
Buffer	128K
Font type	Multilingual code page×40 Simplified Chinese, Traditional Chinese, Japanese,
Emulation	ESC/POS compatible
Net Weight	1.5KG
Dimension	130x130x130mm (W x D x H)



## Accessories

Thermal paper(80mm\*8m)  
Power adapter  
USB cable

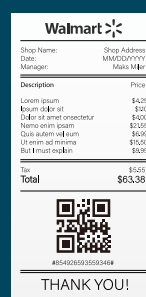
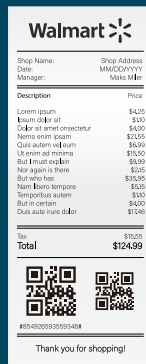
## Work environment

Temperature: 0~45°C  
Humidity: 10~80%RH

## Safety regulation

CCC  
FCC Class A  
CE Class A

## Excellent Printout



High efficiency and high quality printing results

\*Intimate Paper Saving Function

